

Installation instructions for installing the Tornado compact twin tone air horns in Mazda Miatas:

### Remove stock horn from vehicle:

- 1) Locate your stock horn mounted to the radiator support on the passenger side.
- 2) Reaching in through the grill opening (mouth) pull the push-on electrical connector off of the spade terminal to disconnect electrical connection. Note: make sure you pull on the plastic connector NOT the wire.
- 3) There are two brackets holding your stock horn, one attached to the other. To remove them from the car you first must disassemble them. First remove the 10 mm bolt/screw holding the two brackets together (Phillips screwdriver OR 10 mm wrench/socket). Remove the stock horn and bracket assembly through the grill opening. See photo at right.

Note: Remove **both** stock brackets from the car & discard them.



- 4) Next remove the top mounting bolt from the support (10mm) to free the black portion of the bracket from vehicle.

### Attach bracket to horn

- 1) Assemble the bracket to the horn body as indicated in these photos. **Note:** orientation for NA cars is different than for NB cars; for installation in NB cars you will want to position the mounting bracket as shown at right. That is with the “leg” facing away from the horn, and the end with the smaller hole pointing upward (away from the main body of the horn).

In either configuration you will need the ground wire attached to the negative terminal (-) on the compressor and the ring connector on the bolt to obtain a ground connection.



- 1a) Here you can see the orientation for NA cars. That is with the “leg” facing toward the horn body, and with the smaller hole pointing downward along the body of the horn’s compressor.



Attach one end of the ground wire to the negative terminal on the bottom of the air horn.

**Note: the horn relay included with your horn is not needed in this installation. Discard it or use elsewhere.**

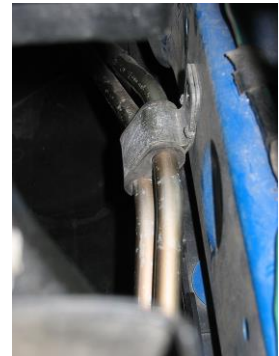
The approx. 1 inch black cube with the 4 brass terminals sticking out, included with your horn is a *relay* – you don't need it; discard it or use it for some other project. This installation utilizes the horn relay installed in your car at the factory.

### Install air horn in vehicle (NA [1990-1997] cars):

Note: *this is one example of a mounting location. The horn wire in your car is long enough to allow for mounting in various other locations.*

- 1) Find the bracket currently holding cooling lines to the inside of the front bumper and remove the 10 mm bolt. You can see this bracket through the opening ahead of the radiator support. It is just to the right (driver's side) of the hood latch mechanism.

*This photo shows the bracket with the 10 mm bolt removed*

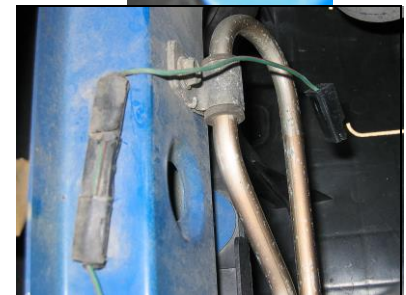


- 2) Insert the horn assembly with bracket into the grill opening, and position so that the original mounting bolt can be reinserted through the smaller hole in bracket and into the cooling line bracket hole. Tighten with open-end or ratcheting box wrench.

*Note: this view is from the driver's side (reverse of above)*



- 3) Disconnect the horn wire mount attached to the top of the front bumper brace by either removing the plastic clip or simply cutting the electrical tape holding the wire to the plastic bracket.



- 4) Attach wire to positive terminal on bottom of horn.

- 5) Replace 15-amp fuse for brake lights and horn with 20-amp fuse provided. The fuse panel on NA cars is located above the driver's side kick panel, under the dash. There should be a clip-on cover over the fuse panel with a graphic indicating the location of the brake light fuse. .

### Install air horn in vehicle (NB [1999-2005] cars):

**Note: If this installation takes you longer than 10 minutes you are doing something wrong. Please re-read the instructions carefully. Especially the part about discarding BOTH original horn brackets (pg 1).**

- 1) Insert the horn assembly with bracket into the grill opening, and position so that original mounting bolt can be reinserted through smaller hole in bracket and into the radiator support bracket. Horn assembly is positioned on radiator side of bracket. Tighten in place.
- 2) Attach original horn wire to the positive terminal on the air horn. A short extension wire is included **if needed** to allow your stock horn wire to reach the new horn.
- 3) Replace 15-amp fuse for brake lights & horn (labeled 'STOP') with 20-amp fuse provided. In NB cars the fuse is located under the hood on the passenger side.

That's it you're done. Give your new air horn a test blast (but not with anyone very close to the horn – it's quite **loud!**).